

ORIGINAL

④

Granite Downtakings

I, Graeme Cheyne, take responsibility for the granite as stated below.

Print name: KEVIN ROSS

Sign: [Signature]

Print name: R. Duff ^{79 pallets}

Sign: [Signature] ⁷⁸

Graeme W Cheyne Building Contractors Representative

Balfour Beatty Representative

Pallet	Contains	Notes
1.1	Bay 1 Top stones 1.1 - 1.9	✓
1.2	Bay 1 Top stones 1.10 - 1.12	✓
1.3	Bay 1 Columns 1.1 - 1.7	✓
1.4	Bay 1 Columns 1.8 - 1.14	✓
1.5	Bay 1 Columns 1.15 - 1.21	✓
1.6	Bay 1 Columns 1.22 - 1.24	✓
1.7	Bay 1 Bottom stones 1.8 - 1.13	✓
1.8	Bay 1 Bottom stones 1.2 - 1.7	✓
2.1	Bay 2 Top stones 2.1 - 2.6	✓
2.2	Bay 2 Top stones 2.7 - 2.13	✓ <u>[Signature]</u>
2.3	Bay 2 Columns 2.1 - 2.7	✓

Box

SAT 19th 15 Pallets still to come away - 4 = 11 MONDAY

2.4	Bay 2 Columns 2.8 - 2.14	✓	
2.5	Bay 2 Columns 2.15 - 2.21	✓	✓
2.6	Bay 2 Columns 2.22 - 2.24		
2.7	Bay 2 Bottom stones 2.8 - 2.13		✓
2.8	Bay 2 Bottom stones 2.1 - 2.7	✓	
2.9	Block 2 2.1 - 2.4	✓	2.4 is in 2 parts (2.5)
2.10	Block 2 2.6 - 2.7	✓	2.7 DAMAGED,
2.11	Block 2 2.8 - 2.14	✓	2.11 is in 2 parts 2.13 is in 2 parts
3.1	Bay 3 Top stones 3.1 - 3.9		
3.2	Bay 3 Top stones 3.10 - 3.13		
3.3	Bay 3 Columns 3.1 - 3.7		Broken column 3.2
3.4	Bay 3 Columns 3.8 - 3.14		
3.5	Bay 3 Columns 3.15 - 3.21		Broken column 3.20
3.6	Bay 3 Columns 3.22 - 3.24		
3.7	Bay 3 Bottom stone 3.1 - 3.9		
3.8	Bay 3 Bottom stone 3.10 - 3.13		
3.9	Block 3 3.1 - 3.4		3.4 is in 2 parts (3.5)
3.10	Block 3 3.6 - 3.7	✓	✓
3.11	Block 3 3.8 - 3.14		3.11 is in 2 parts 3.13 is in 2 parts

19

✓
✓
✓
✓
✓
✓
✓
✓

4.1	Bay 4 Top stones 4.1 - 4.9		✓
4.2	Bay 4 Top stones 4.10 - 4.13		✓
4.3	Bay 4 Columns 4.1 - 4.7		✓
4.4	Bay 4 Columns 4.8 - 4.14		✓
4.5	Bay 4 Columns 4.15 - 4.21	Broken column 4.21	✓
4.6	Bay 4 Columns 4.22 - 4.24		✓
4.7	Bay 4 Bottom stones 4.7 - 4.13		✓
4.8	Bay 4 Bottom stones 4.1 - 4.6		✓
4.9	Block 4 4.1 - 4.4	4.4 is in 2 parts (4.5)	✓
4.10	Block 4 4.6 - 4.7		✓
4.11	Block 4 4.8 - 4.14	4.11 is in 2 parts 4.13 is in 2 parts	✓
4	Block 4 Light	2 parts 10/12 1 PART RETURN	✓
5.1	Bay 5 Top stones 5.1 - 5.9		✓
5.2	Bay 5 Top stones 5.10 - 5.13 + Bay 6 Top stones 6.1 - 6.5		✓
5.3	Bay 5 Columns 5.1 - 5.7	Broken columns 5.3, 5.5, 5.7	✓
5.4	Bay 5 Columns 5.8 - 5.14		✓
5.5	Bay 5 Columns 5.15 - 5.21		✓

5.6	Bay 5 Columns 5.22 - 5.24 + Bay 6 Columns 6.1 - 6.4	
5.7	Bay 5 Bottom stone 5.1 - 5.7	
5.8	Bay 5 Bottom stone 5.8 - 5.13	
5.9	Block 5 5.1 - 5.4	5.4 is in 2 parts
5.10	Block 5 5.5 - 5.6	
5.11	Block 5 5.7 - 5.13	5.10 is in 3 parts 5.12 is in 2 parts
6.1	Bay 6 Top stones 6.6 - 6.15	6.11-6.15 are painted 6.12-6.16
6.2	-	no 6.2 pallet
6.3	Bay 6 Columns 6.5 - 6.11	
6.4	Bay 6 Columns 6.12 - 6.18	
6.5	Bay 6 Columns 6.19 - 6.25	
6.6	Bay 6 Columns 6.26 - 6.29	
6.7	Block 6 6.1 - 6.5	
6.8	Block 6 6.6 - 6.7	
6.9	Block 6 6.8 - 6.13	6.11 is 3 parts 6.13 is 3 parts
6.10	Bay 6 Bottom stones 6.1 - 6.6	
6.11	Bay 6 Bottom stones 6.7 - 6.15	

✓

✓

✓

✓

✓

✓

✓

6.11-6.15 are painted
6.12-6.16
KORNER 11 MISSING
BUT QUANTITY CORRECT

✓

✓

✓
see new pallet old ones
Blocks (Blus)

✓

✓

140

7.1	Bay 7 Top stones 7.1 - 7.6	✓ <i>al</i>
7.2	Bay 7 Top stones 7.7 - 7.12	✓ <i>al</i>
7.3	Bay 7 Top stones 7.13 - 7.15	
7.4	Bay 7 Columns 7.1 - 7.7	7.3 is painted on pallet
7.5	Bay 7 Columns 7.8 - 7.12	Broken column 7.11
7.6	Bay 7 Columns 7.13 - 7.17	
7.7	Bay 7 Columns 7.18 - 7.24	
7.8	Bay 7 Columns 7.25 - 7.30	
7.9		
7.10		
7.11		
7.12	Block 7 7.1 - 7.4	7.4 is in 2 parts (7.5)
7.13	Block 7 7.6 - 7.7	
7.14	Block 7 7.8 - 7.14	7.11 is 3 parts 7.13 is 2 parts
7	Light	2 parts

✓ *al*
 ✓ *al*
 CINO ROTUNDA
 DPC 10/12

15





UNION TERRACE

HIS MAJESTY'S

SARITA

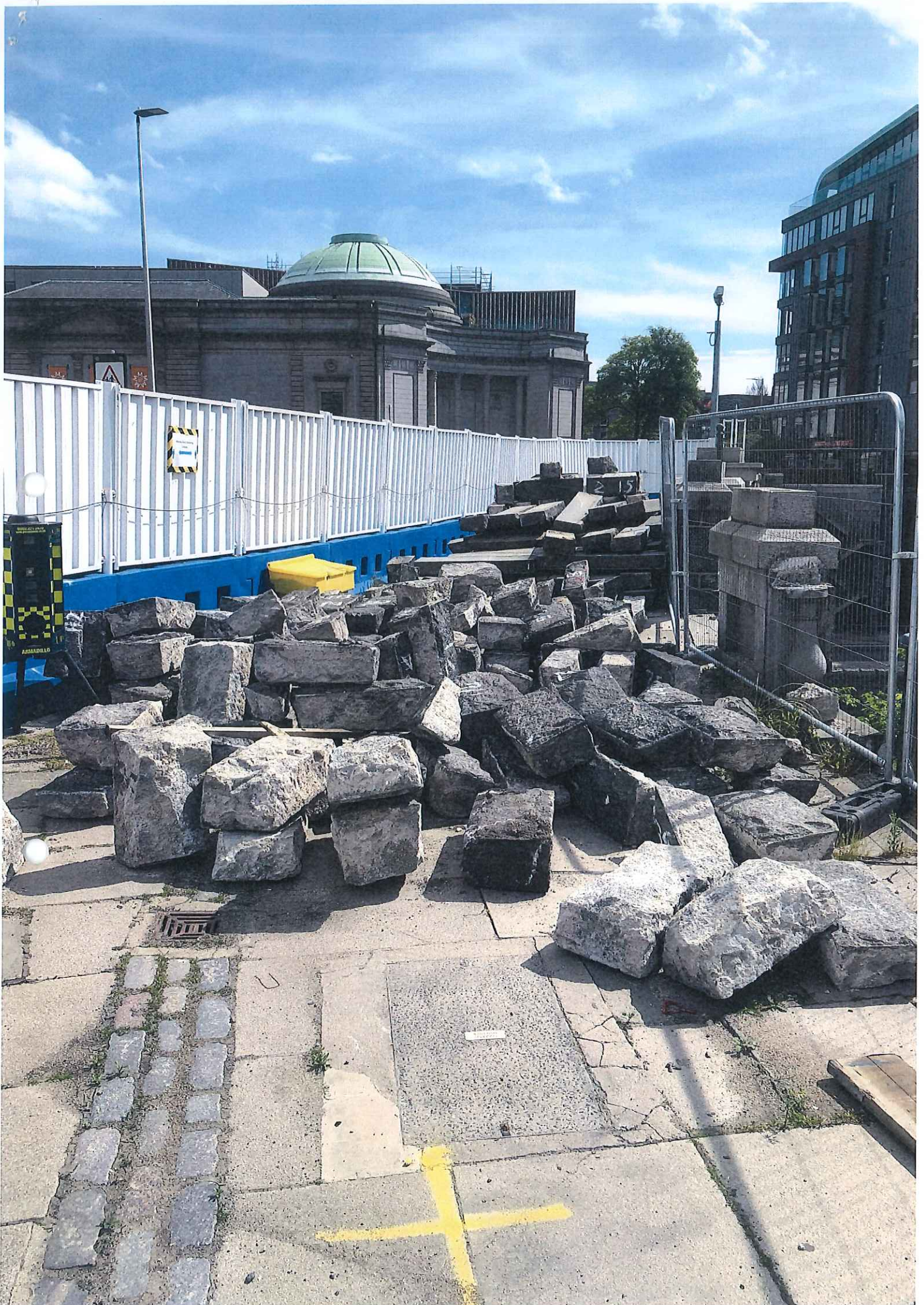


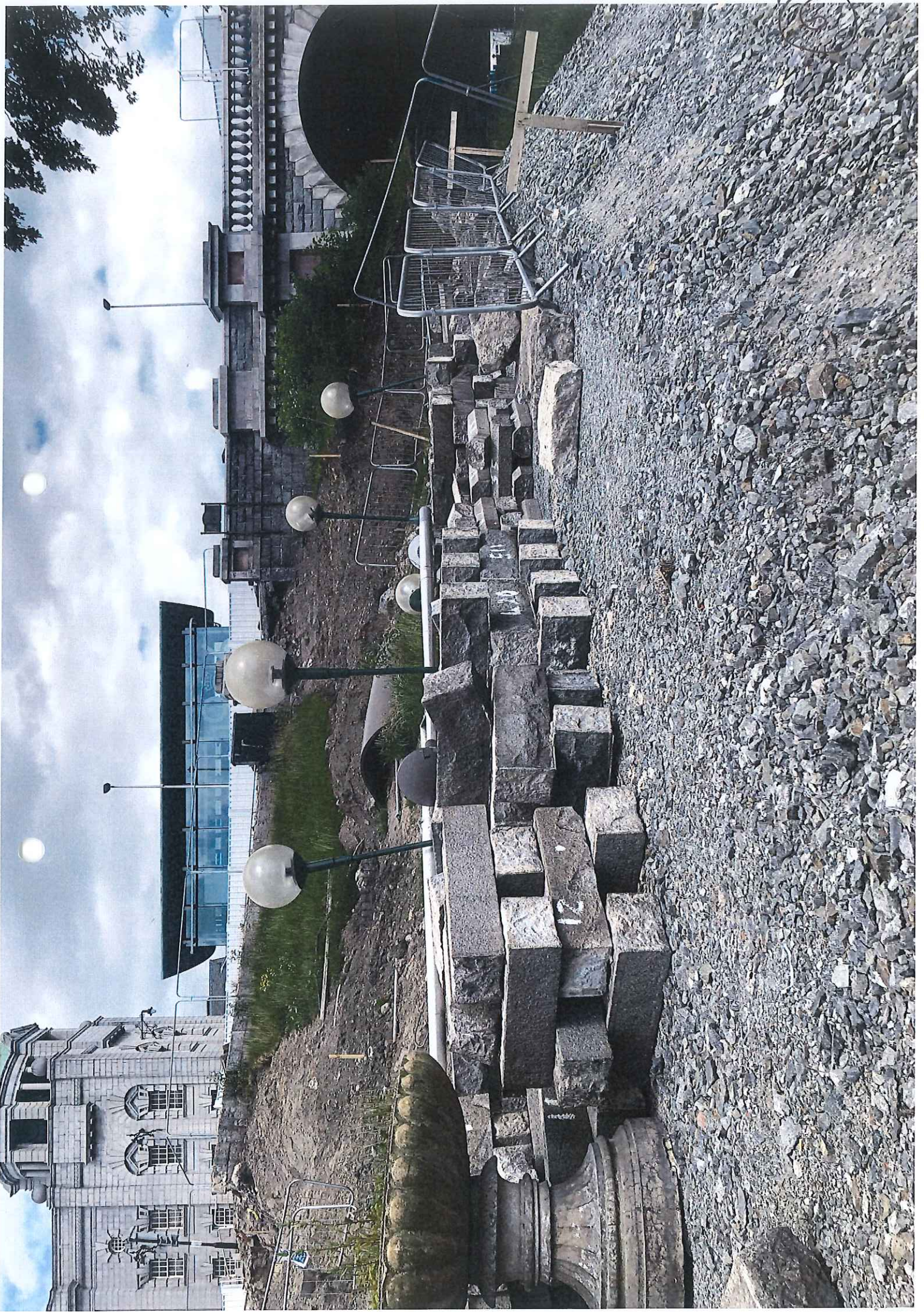
08/28/20 08:04

5



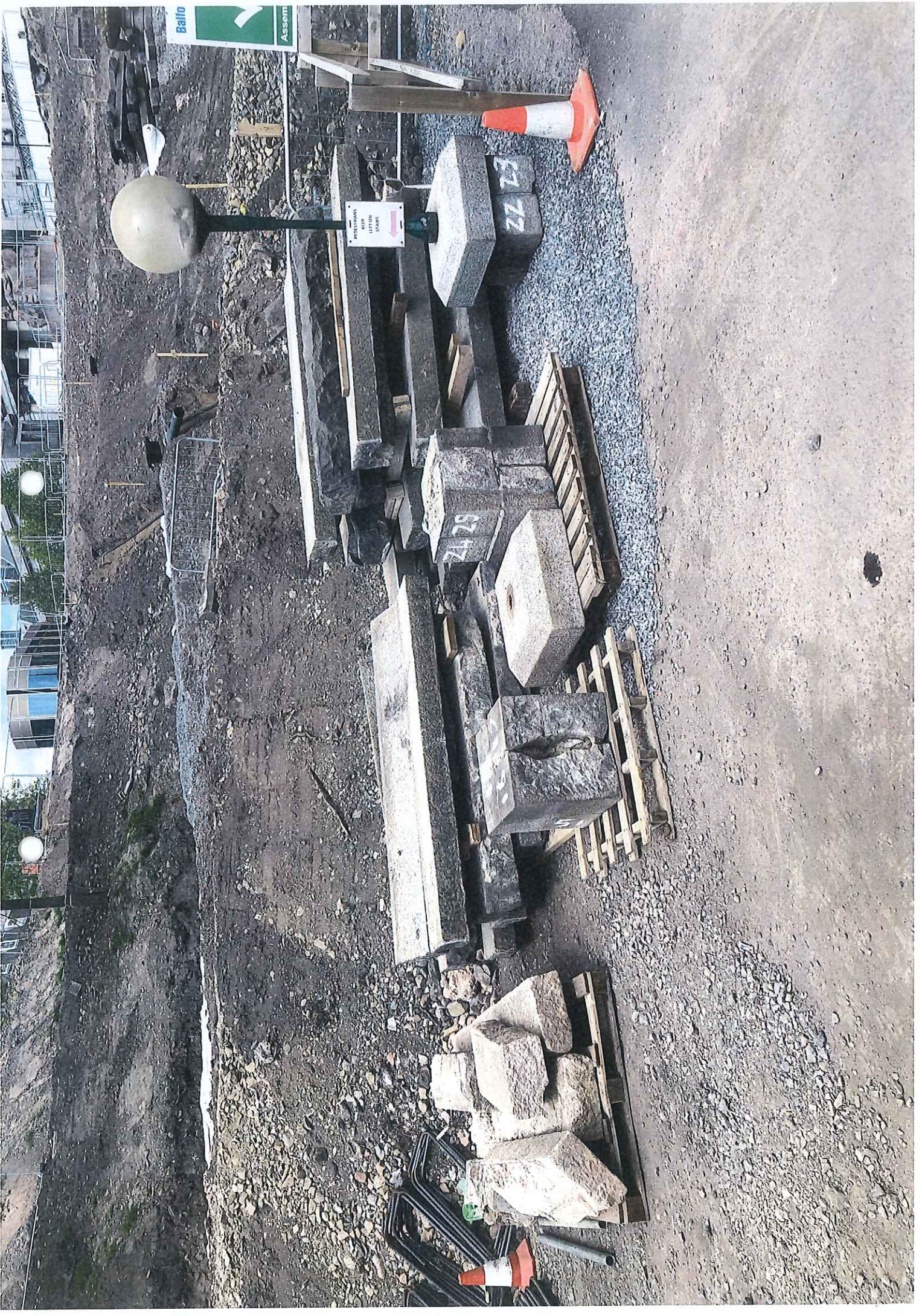






















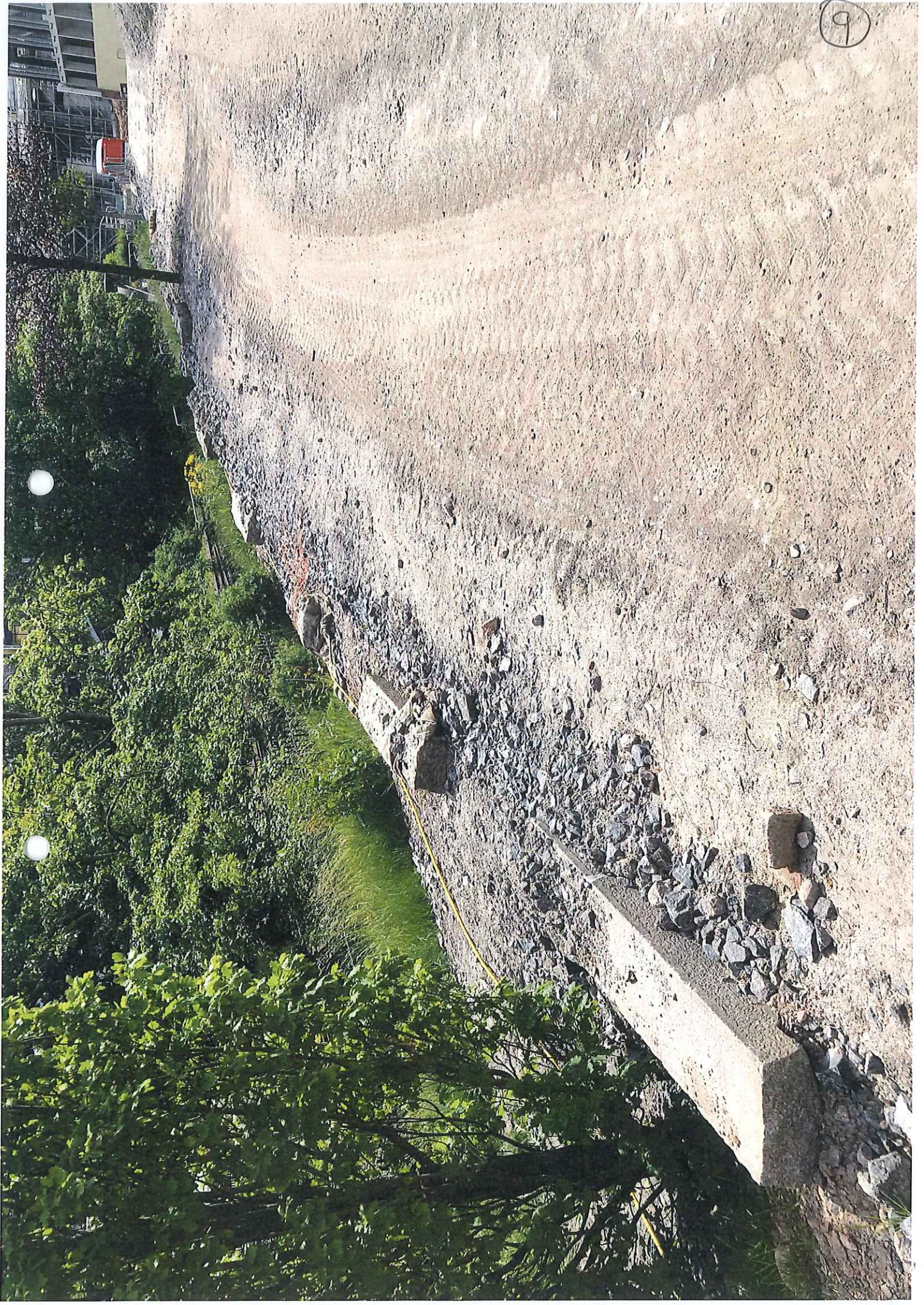


8





9





10



